



SAGE MAS 500

PRODUCT CONFIGURATOR

BUSINESS INSIGHTS

Sage MAS 500 takes inquiry, drill-down, monitoring, and data analysis to a whole new level with out-of-the-box business intelligence tools, including Business Insights Analyzer, Business Insights Explorer, Alerts, Crystal Reports®, Web Reports, and integration with desktop productivity tools.

REPORTING FEATURES

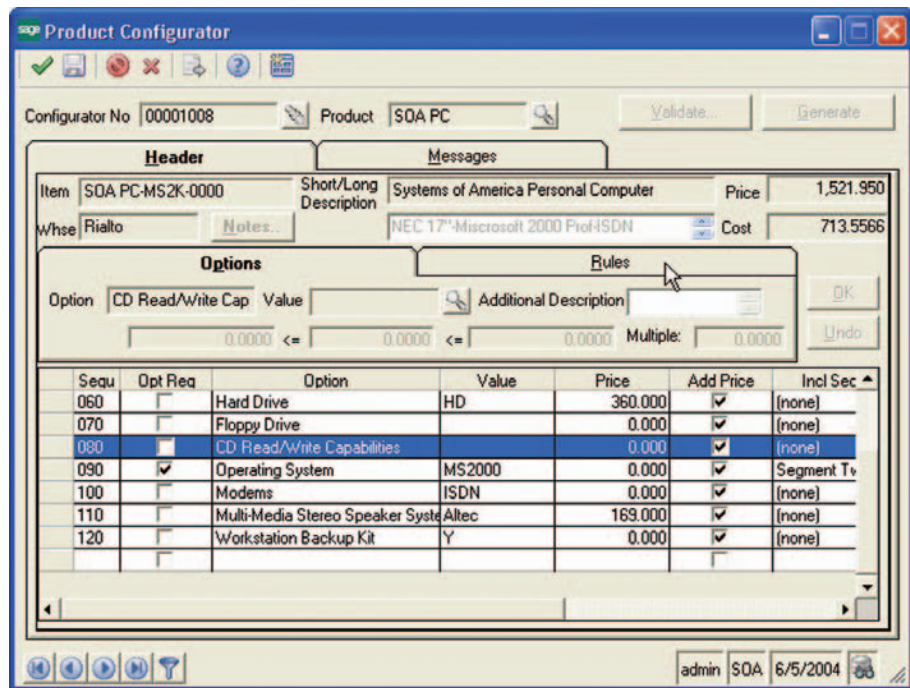
- Maintain custom form layouts for printed forms.
- Tailor forms to your organization's design requirements.
- Export all report data to an external file. Data types supported include ASCII text, delimited, Excel, Lotus 1-2-3, XML, PDF, HTML, RTF, or Microsoft Word.
- Output any report to the screen, a printer, or a variety of file formats.
- Create customized, presentation-quality reports through Crystal Reports software.

REPORTING FEATURES

- Product Definition Report
- PC Options and Values Listing
- PC Item Where Used
- PC Module Options Listing
- PC Options Where Used

SAGE MAS 500 SOLUTIONS

- CRM and E-business
- Financials and Project Accounting
- Distribution and Manufacturing
- Human Resources and Payroll
- Customization and Integration
- Business Intelligence



Advanced Product Configurator for Distributors and Manufacturers

Sage MAS 500 ERP Product Configurator module was designed for use in either distribution or manufacturing environments. Customer service personnel benefit from an easy-to-use interface for feature/option selection, and integration with Sales Order Entry.

This advanced solution is easy to set up and maintain. The intuitive user interface helps the user configure base products quickly using a double mouse-click or search function to choose pre-configured options for each customer order.

Product Configurator builds new parts by starting with a base item and adding features or options to it. New items can be created on the fly using customized item masks, new long and short item descriptions, and other options.

Finished configurations contain unique routings and bills of material built during the configuration process. Product Configurator also builds the item cost and suggested price.

Popular configurations are saved and reused as standard parts. All configurations are based on standard rules that limit or require certain features or options if another feature or option is selected. Final configurations can be validated to make sure that the final item can be produced.

