



Your business in mind.



## SAGE MAS 500

## INVENTORY MANAGEMENT

### BUSINESS INSIGHTS

Sage MAS 500 takes inquiry, drill-down, monitoring, and data analysis to a whole new level with out-of-the-box business intelligence tools including Business Insights Analyzer, Business Insights Explorer, Business Alerts, Crystal Reports®, Web Reports, and Integration with desktop productivity tools.

### REPORTING FEATURES

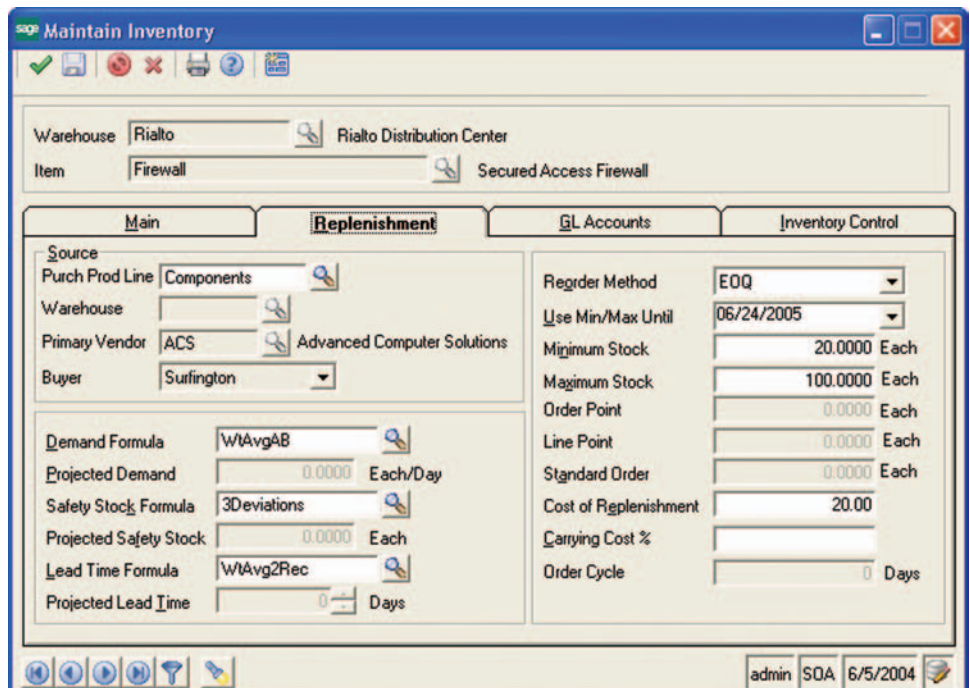
- Maintain custom form layouts for printed forms
- Tailor forms to your organization's design requirements.
- Export any report data to an external file. Data types supported include ASCII text, delimited, Excel, XML, PDF, HTML, RTF, or Microsoft Word.
- Output any report to the screen, a printer, or a variety of file formats.
- Create customized, presentation quality reports through Crystal Reports software.

### REPORTS

- Customer and Vendor Price Lists
- Physical Inventory and Count Cards
- Physical Reconciliation
- Unusual Usage
- Transaction History and Detail
- Trial Balance
- Inventory Valuation
- On-Hand Lot/Serial
- Lot/Serial History
- Stock Status
- Inventory Cost
- Lead Time Exception
- Inventory Analysis and Performance
- Negative On-Hand
- Kit Component Where-Used
- Special Order Items
- Price Sheets

### SAGE MAS 500 SOLUTIONS

- CRM and E-business
- Financials and Project Accounting
- Distribution and Manufacturing
- Human Resources and Payroll
- Customization and Integration
- Business Intelligence



### Improve Your Inventory Controls and Customer Service

The Inventory Management module for the Sage MAS 500 ERP system puts you in firm control of your distribution business through every step of your inventory process. This powerful tool enables you to manage your warehouse and inventory levels more effectively, enhancing customer satisfaction while maximizing profits. It is a key component of the Sage MAS 500 distribution suite, which was designed with input from supply chain experts to meet the needs of the distribution industry.

The warehouse-centric design of the Inventory Management module lets you track costs and sales histories by warehouse, enables you to quickly locate the items your customers are requesting, and allows you to continue taking orders during inventory cycle counting, ensuring that your business continues to operate at peak efficiency.

Inventory Management supports both assemble to order and build to order kits and includes full lot and serial number tracking. In addition, it supports FIFO, LIFO, Average, Actual, Standard, and Warehouse-Specific Costing. More advanced features include support for fixed asset inventories, substitute item definition, landed cost calculations, inventory catalog management, and powerful unit of measure conversion tables.

Nearly all distributors and manufacturers can benefit from the advanced Inventory Management module, which provides the most comprehensive and flexible set of inventory management tools available today.

